

ISSUE 5

Spring 2023

Your regular update on

Where we're

going now

DRUIDS  
HEATH  
TOGETHER

WHERE WE'RE  
GOING NOW



BE BOLD BE BIRMINGHAM

# Where we're going now



Over the last year we've been engaging with residents, hearing your ideas to shape the first version of a masterplan for Druids Heath.

In December 2022, we received approval to bring the South of the estate into the plans alongside the East, meaning that even more people can benefit from the holistic regeneration.

## So where now?

We're still busy engaging with you on the draft masterplan, listening to your ideas and concerns and feeding these into the overall vision for Druids Heath.

We're exploring all options such as improving existing homes against the cost and works of building new ones, taking into consideration things like energy efficiency improvements.



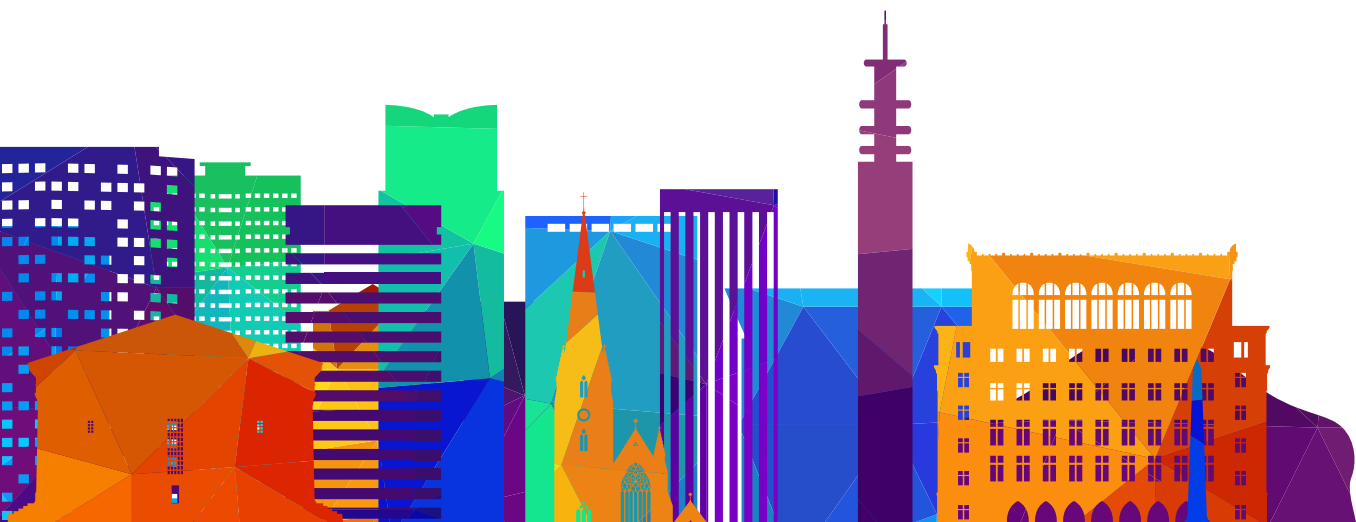
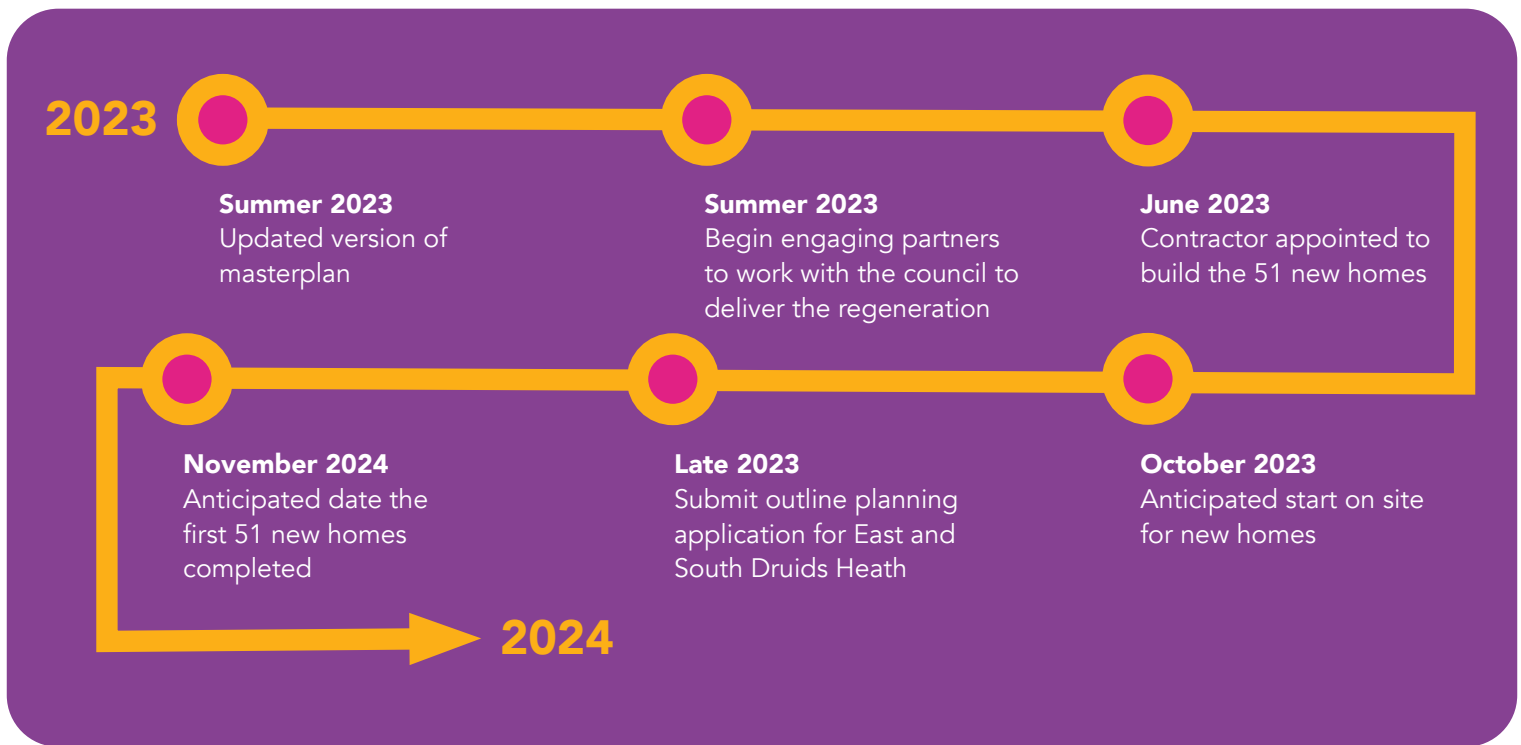
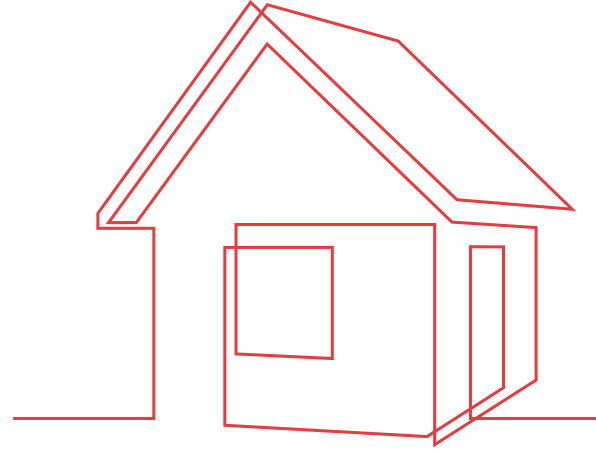
These findings, together with your comments and the proposals for the South will be used to create a new, updated masterplan which we will share with you in the Summer.

Following the updated version of the masterplan, we hope to submit an outline planning application later in 2023. This plan will be a 'template' for the development, agreeing principles such as how many homes can be built and where.

It is likely that partners will be needed to work with the Council to deliver on the vision. When partners are appointed, we won't start building all at once; there will

be detailed planning applications for different parts of the estate. Residents will be able to get involved with the detailed plans once we've agreed partners to work with.

We applied for planning permission to build 51 new affordable social rent homes on the west of the estate so we could start to rehouse those who have already left and want to return. We have now received approval for all three sites, Brockworth Road, Sherston Covert and the former British Legion site on Bells Lane, with plans to start building new homes from this autumn 2023.





## Coming Down

The three blocks at Kimpton Close, Saxelby, Brookpiece and Kingswood have recently been used for filming for a new BBC drama called Two Tone. While filming has been taking place, we have received permission to demolish the towers and have tendered the demolition. We are on programme to start works from April 2023.

## Further Cabinet Approvals

In December 2022, Cabinet provided further approvals for the Regeneration. These included ringfencing the allocations of the new homes in the west of the estate for people that have already moved out the estate and want to return. They also approved the extension of the returners policy for other residents that may be affected by demolition, ensuring they can return.

## Your Druids Heath

Do you have an idea to help make Druids Heath a better place for all? Perhaps you'd like to improve your part of the estate or create something for your neighbours and the wider community to enjoy. We're already looking at a resident's idea for a sculpture on Maypole island and whatever idea it is, we'd like to hear it! Come along to a drop-in or email [talkdruidsheath@birmingham.gov.uk](mailto:talkdruidsheath@birmingham.gov.uk) and let's work with you to help make it happen.

## Still Committed

Despite the news about the Levelling Up Fund bid, we're delighted that Birmingham City Football Club Community Trust remain committed to their plans to have a permanent presence in Druids Heath, playing an active role in supporting the needs of the community for future generations.

The Trust want to invest in the community in line with their strategic vision, providing a diverse and accessible programme of activities for all.

- **Helping people get skills and qualifications through alternative and higher education.**
- **Training and employability programmes with real work experience.**
- **Widen sports participation through sports camps and**

### grassroots clubs.

- **Supporting the health and wellbeing of the community.**
- **Creating employment for local people.**

Look out for details of their summer camps coming soon and work with Maypole Youth Centre and local primary schools.



# HAVE YOUR SAY

The monthly regeneration drop-in sessions have proved popular, come and meet the team from the Council, The Pioneer Group and the Architects and have your say!

---

**MONDAY'S 10AM TO 11.30AM AT  
MANNINGFORD HALL**

**15 MAY  
5TH JUNE**

**WEDNESDAY'S FROM 6.30PM TO 8PM AT  
SPEARHEAD TRUST**

**17 MAY  
21ST JUNE**

**ALSO, ON THE SECOND FRIDAY OF THE MONTH,  
FROM 12.30 TO 13.30PM POP INTO KATH'S  
CAFÉ, IDMISTON CROFT FOR A FRIENDLY CHAT  
WITH THE PIONEER GROUP TEAM.**

---

All residents of Druids Heath welcome to attend.

---

## Keep in Touch

If you want to find out more, ask any questions or let us know what you think you can meet us at a drop-in and follow us on Facebook and Twitter – search for Druids Heath Together.

**You can also visit our website where you can see the masterplan**  
**[www.druidsheathtogether.co.uk](http://www.druidsheathtogether.co.uk)**

You can also get in touch by emailing us on **[talkdruidsheath@birmingham.gov.uk](mailto:talkdruidsheath@birmingham.gov.uk)** or **[druidsheathtogether@pioneergroup.org.uk](mailto:druidsheathtogether@pioneergroup.org.uk)**





# YOU ASK, WE ANSWER

You've been asking us lots of questions through the website, at meetings and face to face so we would like to keep you informed of developments with a 'you ask...we answer' feature in our newsletters. Here's one of the questions you've been asking us.

## **What type of new homes will be built and how many will there be?**

Proposed new homes will be high quality and sustainable with mixed tenures including affordable and homes for sale. The type of homes will reflect local housing needs with flats and houses. There are also plans for new retirement housing.

